

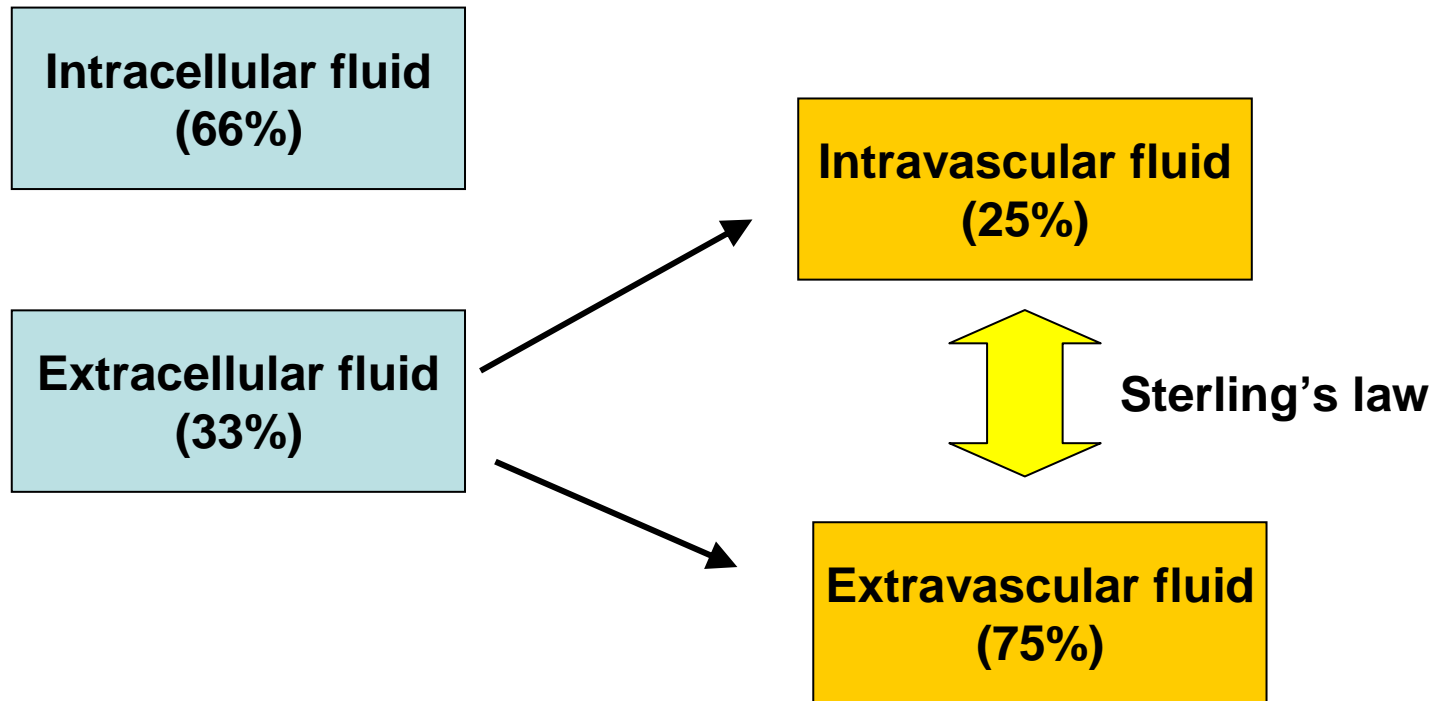
# Peripheral Edema

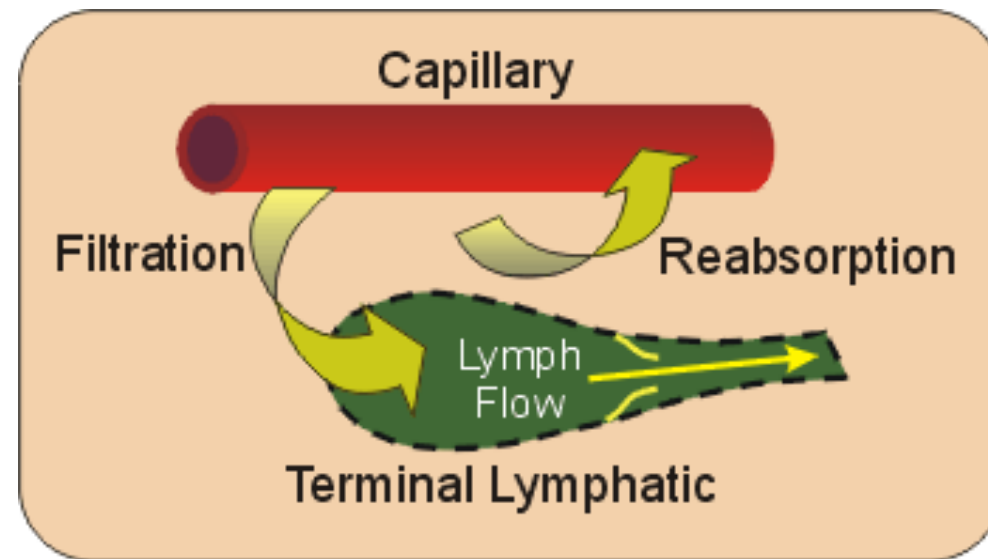
- חולב בן 65. ברקע סוכרת ויל"ד. מגיע למיון עקב בצקות בשתי הרגלים שהחלו לפני שבועיים וגברו מיום ליום.



## אבחנה מבדלת

- אנמנזה
- בדיקה גופנית
- אבחנה מבדלת
- בירור





The interstitial volume (bounded area) depends upon the rates of filtration, reabsorption, lymph flow, and the compliance of the interstitial compartment.

- ***Factors Precipitating Edema***

- Increased capillary hydrostatic pressure (as occurs when venous pressures become elevated by gravitational forces, in heart failure or with venous obstruction)
- Decreased plasma oncotic pressure (as occurs with hypoproteinemia)
- Increased capillary permeability caused by proinflammatory mediators (e.g., histamine, bradykinin) or by damage to the structural integrity of capillaries so that they become more "leaky" (as occurs in tissue trauma, burns, and severe inflammation)
- Lymphatic obstruction (as occurs in filariasis)



**Edema of Right Foot. Note Loss of Distinct Edges of Malleolous and Extensor Tendons on Top of Foot**



**Massive edema.**  
**Note: Remaining imprint of fingers**





**Venous Insufficiency**



**Venous Stasis Ulcer**



**Cellulitis**



**Asymmetric Leg, Swelling secondary to Deep Venous Thrombosis in Right Leg**



**Lymphedema, Left Leg**

Causes of peripheral edema	
<b>Cardiac</b>	<b>Renal</b>
Constrictive pericarditis	Acute/chronic renal failure
Left ventricular systolic and diastolic dysfunction	Nephrotic syndrome
Restrictive cardiomyopathy	<b>Venous</b>
Right ventricular systolic dysfunction	Deep venous thrombosis
Tricuspid valvular disease	Inferior venacaval/iliac compression
<b>Pulmonary</b>	Venous insufficiency
Chronic obstructive pulmonary disease	
Obstructive sleep apnea	
Pulmonary hypertension	

### **Other**

Allergic reactions (angioedema)

Burns

Idiopathic causes

Increased capillary permeability

Liver failure

Lymphedema

Malnutrition/vitamin deficiencies/malabsorption syndromes

Medications

Myxedema

Pregnancy/preeclampsia

Proteinuria/hypoalbuminemia